

Welcome to Year 6



Staff

Teachers – Miss Bramley-Harker & Mr Harris

TAs – Miss Beal, Miss Findlay and Mr Peters (HLTA)

PPA cover – Mrs Hughes

| Week 1 | Monday | Tuesday | Wednesday | Thursday | Friday |
|---------|---------------------|--------------|---------------------|---------------------|---------------------|
| Lions | Miss Bramley-Harker | Mrs Hughes | Miss Bramley-Harker | Miss Bramley-Harker | Miss Bramley-Harker |
| | Miss Findlay | Miss Findlay | Miss Findlay | Miss Findlay | Miss Findlay |
| Ocelots | Mr Harris | Mr Harris | Mr Harris | Mr Harris | Mr Harris |
| | Miss Beal | Miss Beal | Miss Beal | Miss Beal | Miss Beal |
| | Mr Peters | | | | |

| Week 2 | Monday | Tuesday | Wednesday | Thursday | Friday |
|---------|---------------------|---------------------|---------------------|---------------------|---------------------|
| Lions | Miss Bramley-Harker | Miss Bramley-Harker | Miss Bramley-Harker | Miss Bramley-Harker | Miss Bramley-Harker |
| | Miss Findlay | Miss Findlay | Miss Findlay | Miss Findlay | Miss Findlay |
| Ocelots | Mr Harris | Mrs Hughes | Mr Harris | Mr Harris | Mr Harris |
| | Miss Beal | Miss Beal | Miss Beal | Miss Beal | Miss Beal |
| | Mr Peters | | | | |

Home Learning

Reading – My5high5 – Books will be checked on Fridays. Children are expected to read every day at home and can change their books themselves when they need to.

Spellings – Provided termly and will be tested weekly at school on Fridays. Please practice spellings at home. Tests will be written into Home Learning books.

TTRS and Sumdog – Please log on and practice at least 3 times a week

This is not a book for communicating with teachers.

Snacks and lunch

Snacks – Fruit, veg and Cheese. Snack will be eaten after break time in classrooms during lesson input.

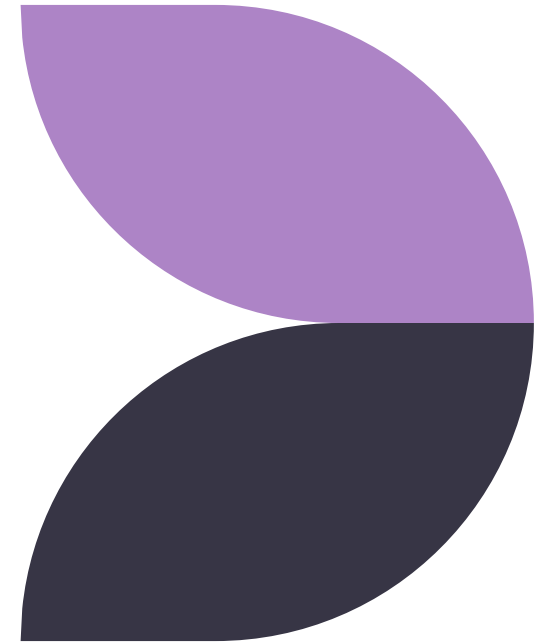
Lunch – Lunches will be eaten in Bevan Hall at 12:30. Packed lunches and school lunches will be eaten together. Playtime will be after lunch and will be on the field until 1:30.

P.E

PE will be on Mondays and Fridays

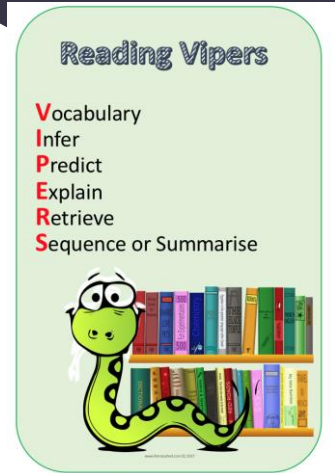
Please ensure long hair is tied back. No earrings are to be worn during PE lessons. Please take earrings off before school or ensure they can be taken off independently before lessons.

Children will be expected to participate unless school has been notified.



Curriculum

Maths – White Rose
English/Reading – Power of Reading



History/Geography
Art/DT
Science



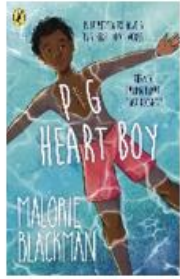
R.E - RE today, French – Language Angels, PE – PE Hub, PHSE
– Jigsaw, Music – Charanga/Guitar lessons

Term 2 trip – British Museum

Freedom



Pig Heart Boy



The Wolf Wilder



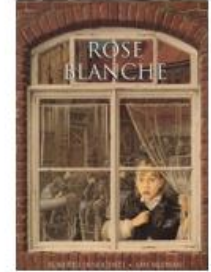
Race to the Frozen North



Stay where you are and then Leave

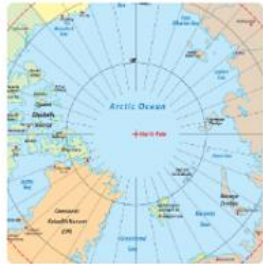


Rose Blanche



History/
Geography

Our Changing World / Maafa



Frozen Kingdoms:



Britain at War



The Circulatory System



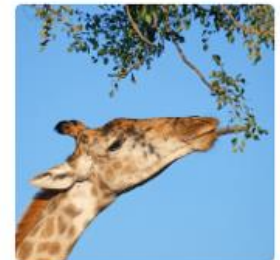
Classifying living things / Electrical circuits



Light Theory:



Evolution and Inheritance:



Timetable

| Year 6 Timetable | | | | | | | | | | |
|------------------|-------------------|-------------------------------|------------|-------------|----------------|---------------|----------|----------------|-------------------------------------------|-----------------------|
| | 8:30-9 | 9-9:20 | 9:20-10:15 | 10:15-10:30 | 10:30-11 | 11-12 | 12-12:30 | 12:30-1:30 | 1:30-2:15 | 2:15-3:10 |
| Monday | ARITHMETIC FB4 | Phase assembly | PE | BREAK | Maths | | English | | Guided Reading | History/ Geography |
| Tuesday (PPA) | | Class Assembly | Maths | | Computing | | English | SPaG | French | Music |
| Wednesday | | Singing Assembly | Maths | | SPaG | English | | Guided Reading | RE | Art/DT |
| Thursday | | Year group assembly (PSHE) | Maths | | SPaG | English | | Guided Reading | Reading for pleasure and reflection | Science |
| Friday | | KS2 Assembly | Maths | | Guided Reading | Spelling test | English | | PE | SPaG |

Assessment

NFER tests will be taken by all student each term. They help us to track progress and do not contribute towards SATs scoring

SATs will take place in May 2024. Mock papers will take place after Christmas and again in Term 4.

Residential

An overnight visit to Kench Hill is planned for July.

Each class will spend a night each in succession with an overlap day in between.



Who to contact

For general enquiries and admissions please email:

admin@headcorn.kent.sch.uk

To contact a member of our Senior Leadership Team or for confidential matters please email:

slt@headcorn.kent.sch.uk

To contact a member of our Inclusion Team please email:

inclusion@headcorn.kent.sch.uk

Thank you